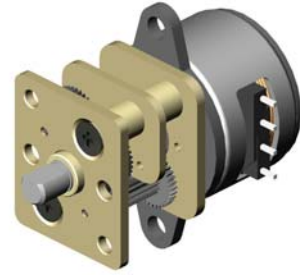


GEARED STEPPING MOTOR SRM15 SERIES



Application
 CCD Monitor
 Camera Zoom

MODEL	VOLTAGE		CURRENT	STEP ANGLE	PHASE	DRIVE MODE	MASS
	OPERATING RANGE	NOMINAL	A	18°	2	BI-POLAR	15.3g
21SRM1509009	2.97V~3.63V	3.3V	0.33/Phase				

Specification 21SRM1509009

